

STYLE

(news)

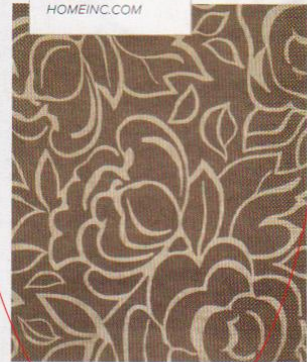
PRODUCED BY
HEATHER J. PAPER

CALLIGRAPHY BY
BETSY DUNLAP

TEXTURES TAKE ON A MORE IMPORTANT ROLE IN ROOMS WITH NEUTRAL SCHEMES. THIS SHELL-ENCRUSTED BUST IN A ROOM DESIGNED BY MANDY CULPEPPER IS THE PERFECT FOIL FOR THE GLASS-BASED LAMPS ON EITHER SIDE; THANKS TO THEIR SEE-THROUGH QUALITY, THE SCULPTURE BECOMES EVEN MORE PROMINENT.



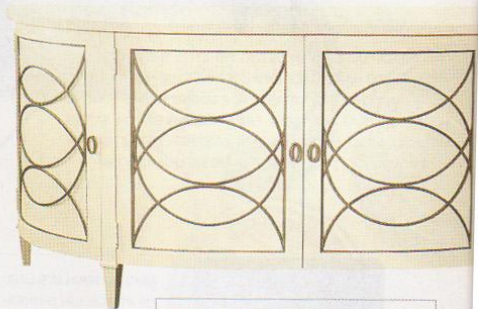
THE STYLIZED FLORAL PATTERN OF THIS "AMOUR" WOOL-AND-SILK RUG IS, AT ONCE, UNDERSTATED AND EYE-CATCHING. \$90-\$95/SQ. FT. VERDE HOME, 1000 MARIETTA ST., SUITE 244, ATLANTA 30318. (678) 927-9113; VERDE-HOMEINC.COM



Comfort

DESIGNER INSIGHT

"Serenity, calm and peace can all be achieved with small touches," says shop owner and decorator Phoebe Howard. "Think of flickering white candles, white orchids, perfectly laundered white sheets, fluffy white towels, ice-cold vodka and Rod Stewart's love songs. When you address all of the senses, the cumulative effect of seemingly insignificant details can be extremely effective. It's like playing tricks on your mind, so to speak, since serenity, calm and peace are all just states of mind anyway. No matter what your stage in life, or your financial state, anyone can make a little extra effort and reap the rewards of extravagance."



THE CIRCULAR MOTIFS THAT FRONT THIS SIDEBOARD SEEM TO GIVE A HINT OF THE DISHES WITHIN. BUT THE REAL BEAUTY OF THIS PIECE IS THAT IT'S RIGHT AT HOME IN A VARIETY OF ROOMS. HICKORY CHAIR DUCHAMP SIDEBOARD, \$6,468. BUNGALOW CLASSIC, 1197 HOWELL MILL RD., ATLANTA 30318. (404) 351-9120; BUNGALOWCLASSIC.COM

The Metropolitan

"MUSIC IS AN INTEGRAL PART OF CREATING A QUIET HOME. SEVERAL YEARS AGO, A FINNISH MAGAZINE EDITOR GAVE ME KAANAANMAA, A CD OF FINNISH HYMNS BY SAXOPHONIST JUKKA PERKO. IT'S MY FAVORITE MUSIC FOR RELAXING, AND I LOVE IT EVEN MORE EVERY DAY." – CLINTON SMITH, EDITORIAL DIRECTOR



A TRAY OF TRANSLUCENT ETCHED-RESIN ACCESSORIES ADDS ICY FLAIR TO A COUNTERTOP TABLEAU. WATERWORKS "GLACIER" COLLECTION. \$80-\$185; \$935 FOR THE SET. 1 WEST PACES FERRY RD., ATLANTA 30305. (404) 266-1080; WATERWORKS.COM



PLUSH, OVERSIZE AND ULTRA-ABSORBENT, PREMIUM TOWELS ARE ALL-TOO-NECESSARY LUXURIES. MACY'S HOTEL COLLECTION "MICROCOTTON BORDER TOWELS," \$25 EACH. MACY'S, 3393 PEACHTREE RD. NE, ATLANTA 30326. (404) 231-2800; MACYS.COM



FORGO BOLD, POLISHED FIXTURES FOR SUBTLY TEXTURED ALTERNATIVES, LIKE THIS TABLE LAMP FASHIONED FROM RECYCLED CEMENT BAGS BY HAITIAN ARTISANS. PAPIER-MÂCHÉ "CYLINDER LAMP," \$485. VERDE HOME, 1000 MARIETTA ST. NW, ATLANTA 30318. (404) 754-6365; VERDEHOMEINC.COM

PERSONAL THOUGHTS

"My idea of a cozy, serene bedroom has always been wrapped up in the precedent my grandmother set for me. Her gracious boudoir is the quintessential escape, awash in pure white, with a crisp coverlet—and just the right balance of Victorian walnut, Prussian blue, and a gallery of meaningful prints, watercolors and vintage photographs. But these accents are all but lost on my favorite element: a chaise lounge in the corner, where I spent many delightful childhood hours thumbing through picture books. Ever since, my dream master retreat has been defined by this essential upholstered piece, which, happily, can be equally at home in the bathroom as it is in one's sleeping quarters, creating a wonderful spot to while away the hours. Add a basket of plush towels or blankets, floor-sweeping draperies, and an *étagère* or pedestal table for stacks of books and flowers, and you instantly have a room that feels truly lived in and loved." – Kate Abney, Assistant Editor



BENECKY'S TAKE ON THE BATH MAKES THE BATHING PLACE JUST AS WELCOMING AS A LIVING SPACE. HANDSOME, TACTILE MATERIALS THAT FEEL WARM UNDERFOOT COMBINE WITH SOFT FABRICS FOR A ROOM THAT'S COZY TO A DIVINE DEGREE. WHO WOULDN'T WANT TO SPEND SOME DOWNTIME IN A LAVATORY AS LUXURIOUS AS THIS? SOAKER TUB, WATERWORKS.

A ONE-OF-A-KIND VINTAGE CHAISE WITH HAND-TURNED LEGS AND CUSHIONY VELVET IS EXACTLY THE THING FOR A LUXURIOUS LOUNGE. \$5,200. BELVEDERE, 996 HUFF RD. NW, ATLANTA 30318. (404) 352-1942; BELVEDEREINC.COM

